

PAVING

1

All paving should be undertaken by qualified professionals to ensure works meet industry standard and do not impact the structural integrity of your home.

Keep your paving even - avoid placing large expanses of concrete on one side of the house and heavily watered garden beds on the other.



2

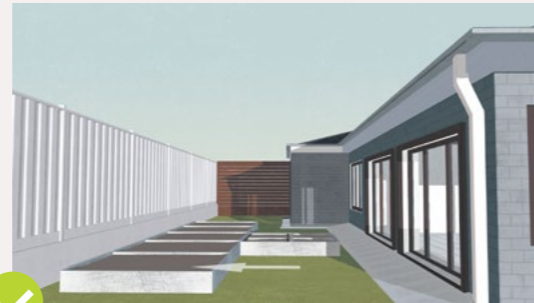
Ensure there is a sealed pathway between your house and lawns. This will keep moisture away from your slab.



LANDSCAPING

1

Garden beds should be kept away from the home



2

Light vegetation should be planted close to paving and heavy vegetation at your fence line.



3

Do not plant trees close to your home where roots may grow and damage the slab.



Boutique is proud to be part of ABN Group, Australia's leader in construction, property and finance. This means every Boutique home is backed by 42 years of industry excellence in the design, construction and delivery of quality homes. Find out more about what this connection means for you at abngroup.com.au

ABNGROUP.COM.AU

For more information please visit BoutiqueHomes.com.au, homecare

Images used in this brochure are for illustrative purposes. Customers should refer to the CSIRO guidelines for correct landscaping and paving guidelines for their new home. Correct at time of print 15 July 2019.



ABN Group
Landscaping Guide 2019

OWNER'S RESPONSIBILITIES

STRUCTURAL MOVEMENT

Congratulations on receiving the keys to your new home! We are proud to provide you with a 25 year structural guarantee, which is our commitment to the quality of your new home.

We engineered the design of your slab for the specific soil type of your block. As the owner, there are measures you need to take to protect the structural integrity of your slab.

These measures include landscaping and paving, and ongoing home owner's maintenance, which can impact the structure of your home if not carried out correctly.

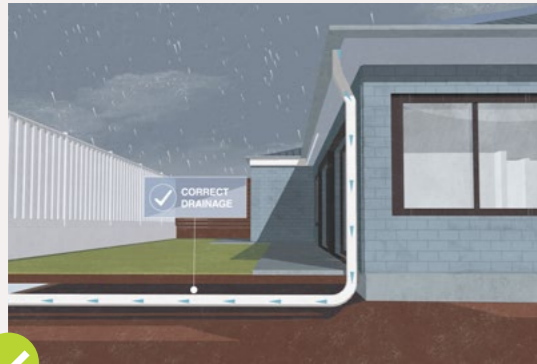
All paving and landscaping works should be undertaken in line with the CSIRO Guidelines. A copy of these guidelines can be found in your HIA New Home Contract and also in your handover pack.



DRAINAGE

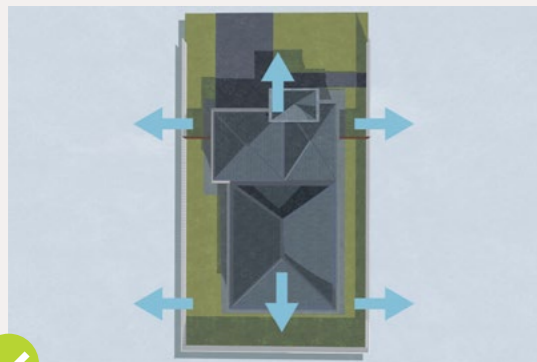
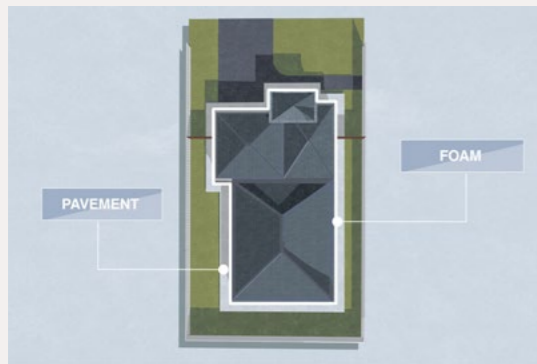
1

It's important to ensure the correct drainage to your home and landscaping, so moisture doesn't get to your slab, as this can result in slab heave.



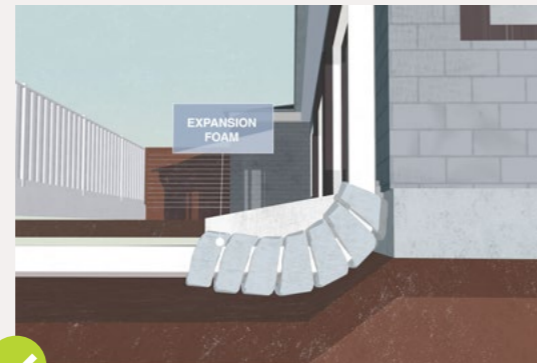
2

So water can drain away from your slab, ensure there is a sealed path installed around the perimeter of your home, with fall away from the building.



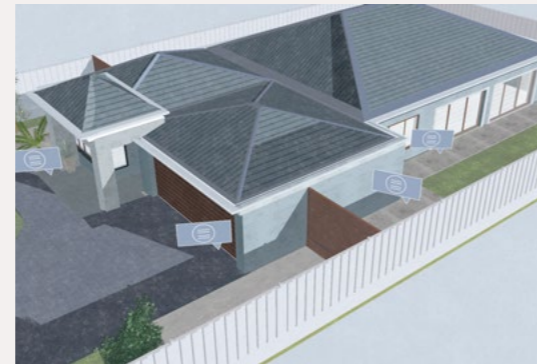
3

Expansion foam should be used around downpipes and all solid structures to ensure these don't crack when paving expands or shrinks.



4

Drainage has also been designed specifically for your new home, so don't alter what has been installed.



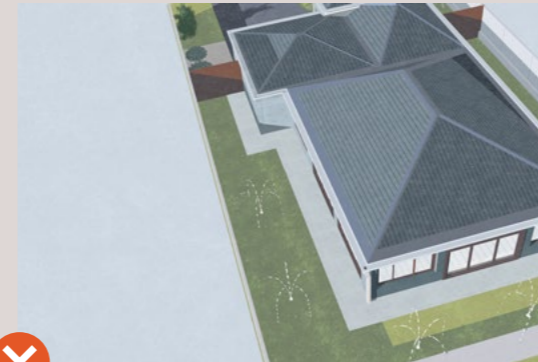
5

It's important to keep your gutters and drainpipes clear of debris.



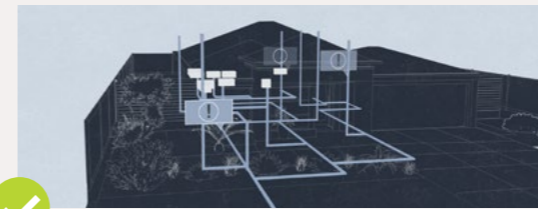
6

Don't install sprinkler systems or irrigation systems directly next to your home.



7

Regularly maintain your plumbing, drainage and stormwater systems by immediately carrying out repair work if leakages or breakages occur.



8

Ensure all overflow pipes, split system overflow units and hot water systems are connected to your storm water system. Be mindful of installing anything else that expels water, including split system air conditioners and garden taps. These must be expertly connected to your drainage system by a professional.

