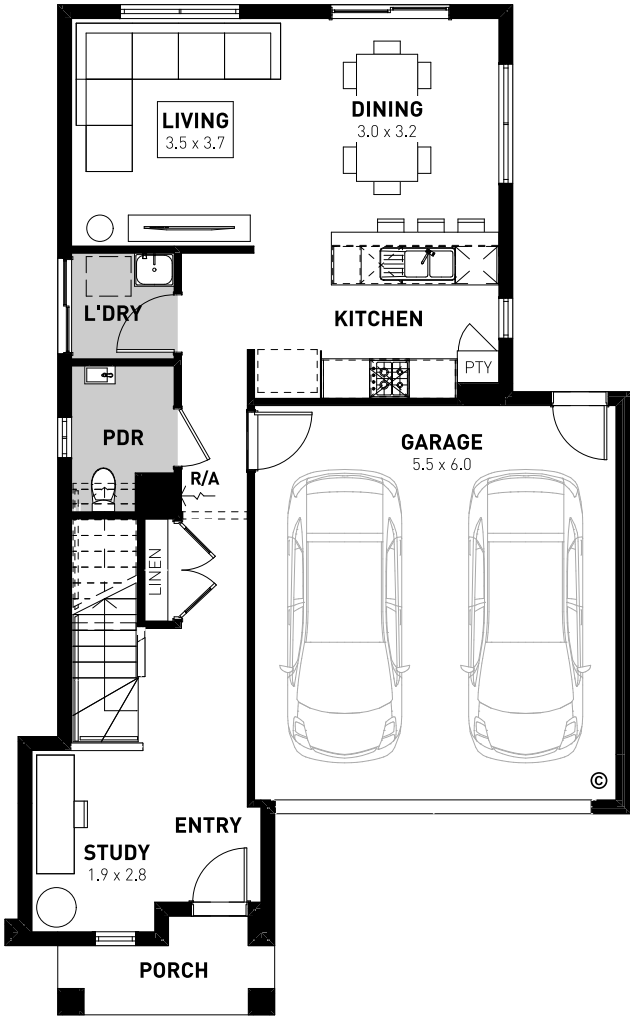
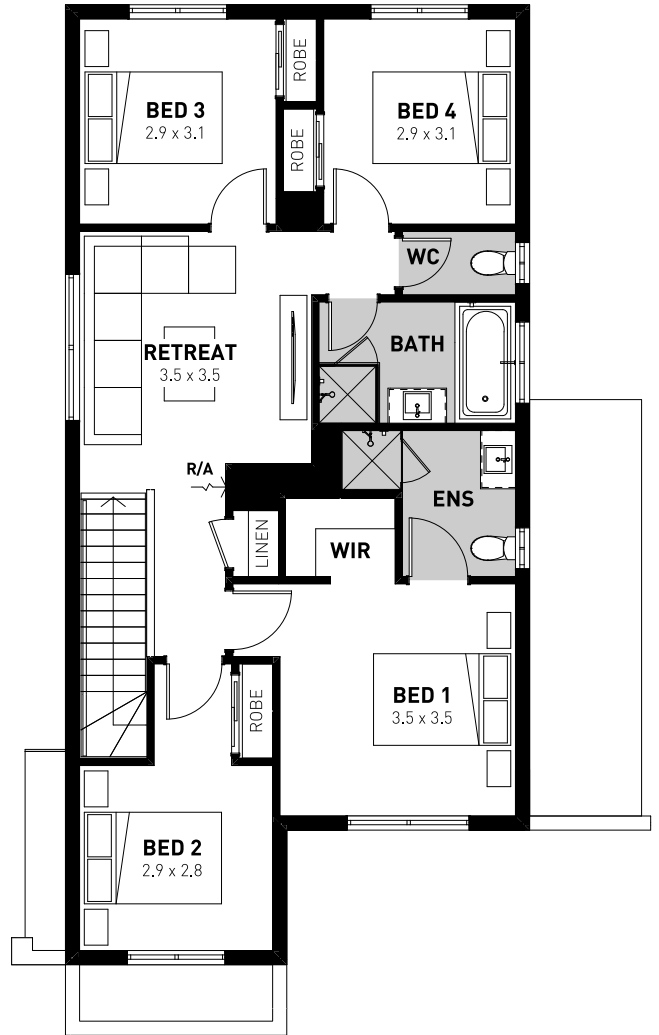


Onyx 21

 4
  2.5
  2



Ground floor



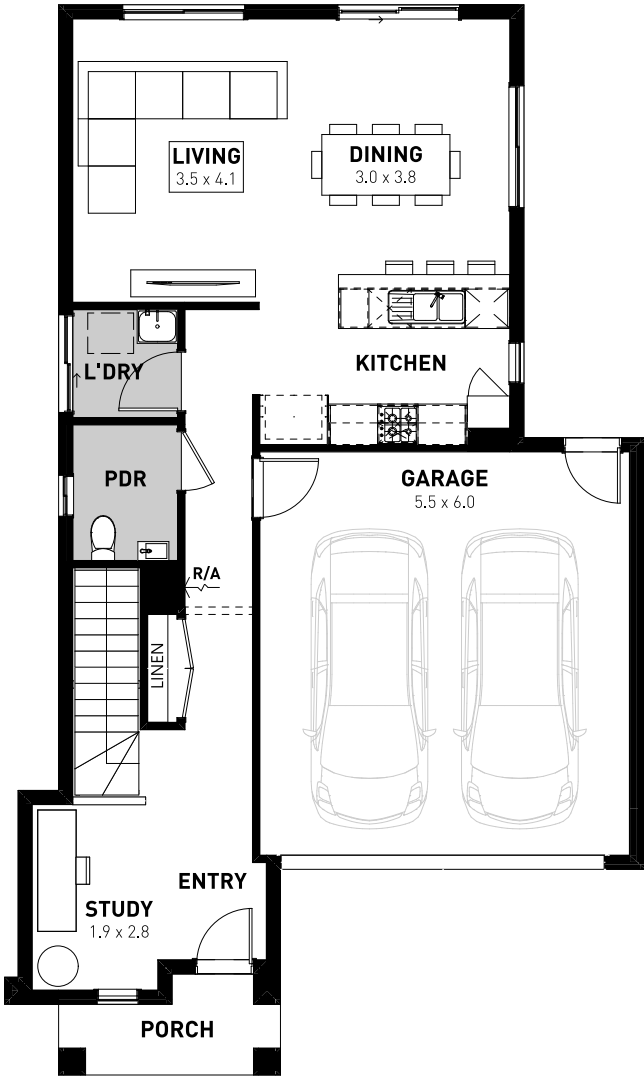
First floor

| | | |
|--|---|--|
| Minimum Lot Size: 10.5m x 21m | Home Size: 9.5m x 15.3m | 21.47 sq |
| Design Options: <input type="checkbox"/> Corner Treatment | <input type="checkbox"/> Outdoor Living | <input type="checkbox"/> Butler's Pantry |

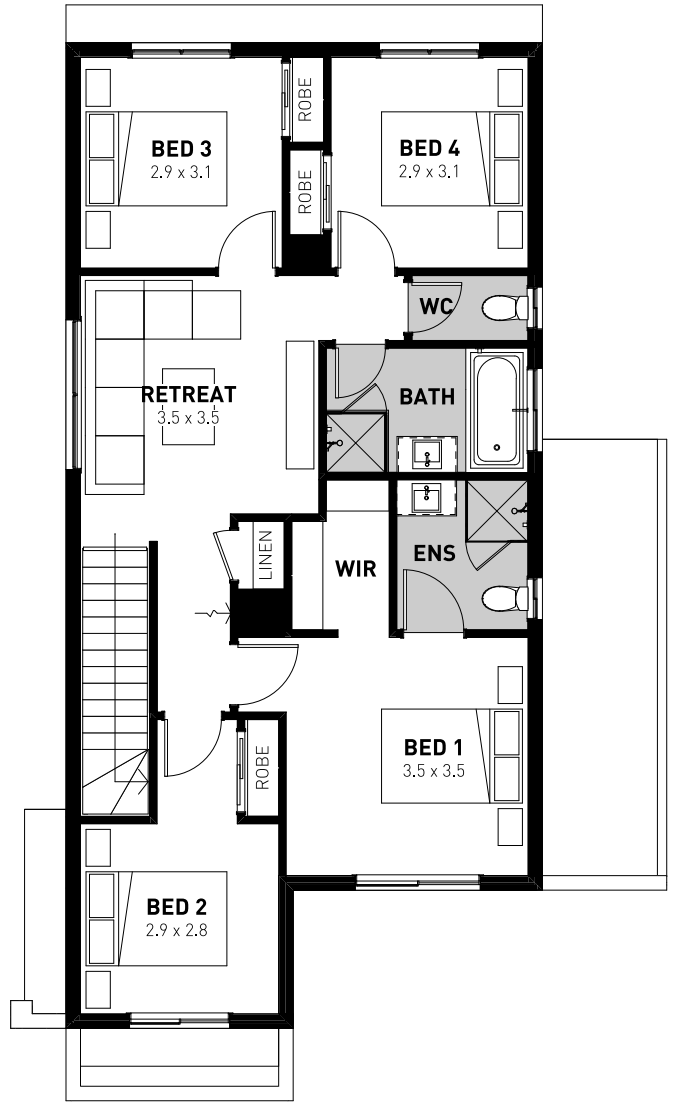
Disclaimer © 2024, all plans are protected by copyright and are owned by ABN Group (VIC) Pty Ltd. Plans are based on a modern facade. Images used in this brochure are for illustrative purposes only and may depict fixtures, finishes, features, furnishings and landscaping not included in standard pricing or supplied by Homebuyers Centre including, but not limited to, planter boxes, fences, indoor fireplaces, hearth and tiling and barbeques. For more information on the pricing and specification of these homes please contact one of our New Homes Consultants. All information contained within this brochure was accurate at time of printing May 2024.

Onyx 22

 4
  2.5
  2



Ground floor



First floor

| | | |
|--------------------------------------|------------------------------|-----------------|
| Minimum Lot Size: 10.5m x 21m | Home Size: 9.5m 15.9m | 21.88 sq |
|--------------------------------------|------------------------------|-----------------|

Disclaimer © 2024, all plans are protected by copyright and are owned by ABN Group (VIC) Pty Ltd. Plans are based on a modern facade. Images used in this brochure are for illustrative purposes only and may depict fixtures, finishes, features, furnishings and landscaping not included in standard pricing or supplied by Homebuyers Centre including, but not limited to, planter boxes, fences, indoor fireplaces, hearth and tiling and barbeques. For more information on the pricing and specification of these homes please contact one of our New Homes Consultants. All information contained within this brochure was accurate at time of printing May 2024.