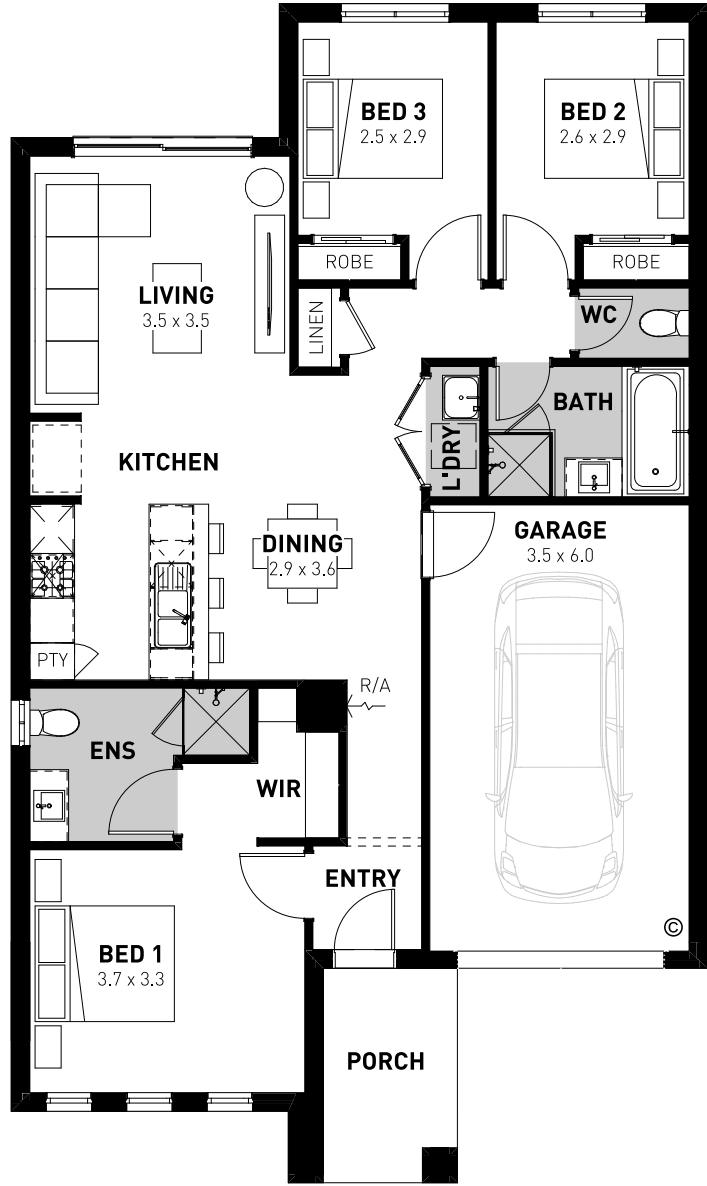


Piper 14

 3
  2
  1



Minimum Lot Size:	10.5m x 21m	Home Size:	9.4m x 15.7m	13.78 sq
Design Options:	<input type="checkbox"/> Alternate Kitchen	<input type="checkbox"/> Outdoor Living	<input type="checkbox"/> Ensuite Upgrade	
	<input type="checkbox"/> Larger Living			

Disclaimer © 2024, all plans are protected by copyright and are owned by ABN Group (VIC) Pty Ltd. Plans are based on a modern facade. Images used in this brochure are for illustrative purposes only and may depict fixtures, finishes, features, furnishings and landscaping not included in standard pricing or supplied by Homebuyers Centre including, but not limited to, planter boxes, fences, indoor fireplaces, hearth and tiling and barbeques. For more information on the pricing and specification of these homes please contact one of our New Homes Consultants. All information contained within this brochure was accurate at time of printing May 2024.