

# INVEST WITH CONFIDENCE 6% RENTAL RETURN GUARANTEED



Secure a minimum 6% rental return on select quality Display Homes in Melbourne.

**VIBE 25 | 20 Soho Boulevard, Berwick | \$909,900**



Images are artist impressions for illustrative purposes only.

Homebuyers Centre Display Home investments guarantee 6% leaseback, which include landscaping and upgrades, plus your tenants [Homebuyers Centre] have it professionally maintained throughout the duration of the Display Village being open.

With flexible finance available, let our in-house finance specialists help you choose the home loan that's right for you from some of Australia's leading lenders.

Weekly rental income	\$1,049
Weekly repayments	-\$416*
Weekly earnings	=\$633
Annual earnings	\$32,986

- ✓ Earn Positive Income
- ✓ Hassle Free Investment
- ✓ No Maintenance Costs
- ✓ Huge Range of Luxury Inclusions
- ✓ Easy Finance Options

\*Terms & Conditions apply. Interest Only Loan Repayments of \$415.52 per week are based upon a 20% deposit on the fixed interest rate of 2.74% for 2 Years, reverting to the variable interest rate of 2.86% on the Resolve Home Loans Classic Saver Home Loan. The interest rates are effective 30 August 2021 and are subject to change. Fees & charges may apply including any applicable Lenders Mortgage Insurance. The Comparison rate is 2.93% and is based on Interest Only repayments for the first 5 years on a loan amount of \$727,920.00 over a loan term of 30 years. Warning: This comparison rate is true only for the examples given and may not include all fees and charges. Different terms, fees or other loan amounts might result in a different comparison rate. All finance services provided by Resolve Finance, Australian Credit Licence No. 385487.



# Vibe 25

## \$909,900

20 Soho Boulevard, Berwick



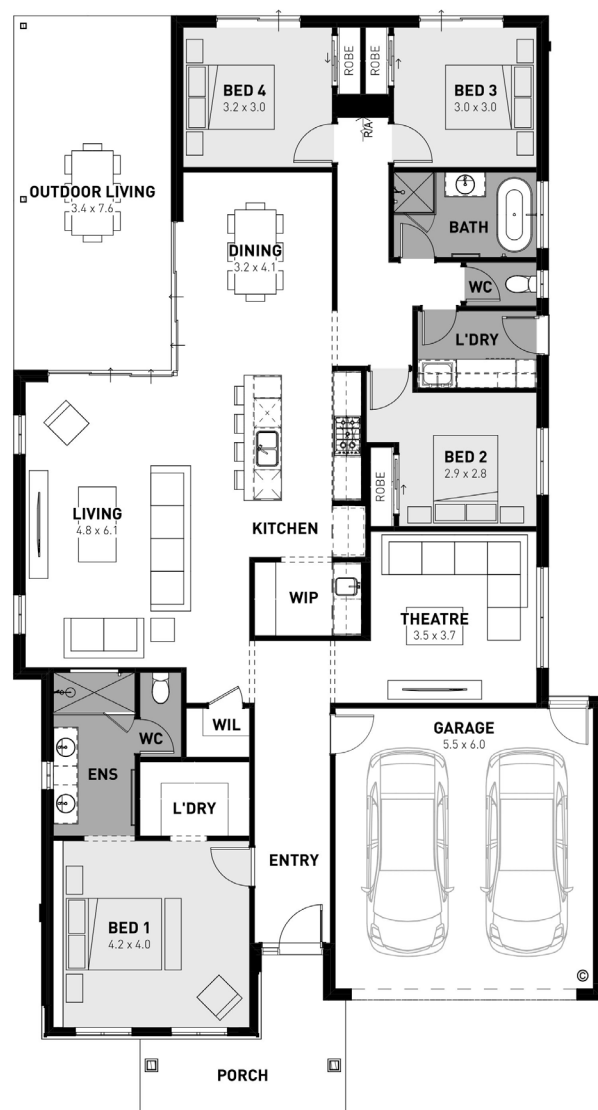
Relax in the spacious open plan living area featuring an entertainers kitchen with island bench or the dedicated dining space and outdoor living zone.

Escape to the master bedroom with its walk-in robe and oversized ensuite; or head to the rear of the home to discover three not-so-minor bedrooms that each feature built-in robes.



### Luxury Inclusions in this Display Home:

- Stunning architectural façade
- 20mm Caesartone benchtops to kitchen
- Professional landscaping and fencing
- Outdoor Living Area
- Westinghouse Stainless Steel microwave
- Westinghouse Stainless Steel dishwasher
- 900mm Westinghouse Stainless Steel Cooktop, Rangehood and Oven
- Entertainer Doors to Outdoor Living
- Double Vanity to Ensuite
- Premium Quality Carpets
- Premium Quality Laminate Floating Floors



\*Terms & Conditions apply. Interest Only Loan Repayments of \$415.52 per week are based upon a 20% deposit on the fixed interest rate of 2.74% for 2 Years, reverting to the variable interest rate of 2.86% on the Resolve Home Loans Classic Saver Home Loan. The interest rates are effective 30 August 2021 and are subject to change. Fees & charges may apply including any applicable Lenders Mortgage Insurance. The Comparison rate is 2.93% and is based on Interest Only repayments for the first 5 years on a loan amount of \$727,920.00 over a loan term of 30 years. Warning: This comparison rate is true only for the examples given and may not include all fees and charges. Different terms, fees or other loan amounts might result in a different comparison rate. All finance services provided by Resolve Finance, Australian Credit Licence No. 385487.

resolve.  
finance

MINTA