

INVEST WITH CONFIDENCE 6% RENTAL RETURN GUARANTEED



Secure a minimum 6% rental return on select quality Display Homes in Melbourne.

LAWSON 28 | 236 Sovereign Drive, Mount Duneed | \$889,900



Images are artist impressions for illustrative purposes only.

Homebuyers Centre Display Home investments guarantee 6% leaseback, which include landscaping and upgrades, plus your tenants [Homebuyers Centre] have it professionally maintained throughout the duration of the Display Village being open.

With flexible finance available, let our in-house finance specialists help you choose the home loan that's right for you from some of Australia's leading lenders.

Weekly rental income	\$1,026
Weekly repayments	-\$424*
Weekly earnings	= \$602
Annual earnings	\$31,304

- ✓ Earn Positive Income
- ✓ Hassle Free Investment
- ✓ No Maintenance Costs
- ✓ Huge Range of Luxury Inclusions
- ✓ Easy Finance Options

*Terms & Conditions apply. Interest Only Loan Repayments of \$362.22 per week are based upon a 20% deposit on the Initial Interest rate of 2.86% , reverting to the variable interest rate of 2.56% on the Resolve Home Loans Classic Saver Home Loan. The interest rates are effective 10 December 2021 and are subject to change. Fees & charges may apply including any applicable Lenders Mortgage Insurance. The Comparison rate is 2.72% and is based on Interest Only repayments for the first 5 years on a loan amount of \$607,920.00 over a loan term of 30 years. Warning: This comparison rate is true only for the examples given and may not include all fees and charges. Different terms, fees or other loan amounts might result in a different comparison rate. All finance services provided by Resolve Finance, Australian Credit Licence No. 385487.

Lawson 28

\$889,900

236 Sovereign Drive, Mount Duneed, Mount Duneed



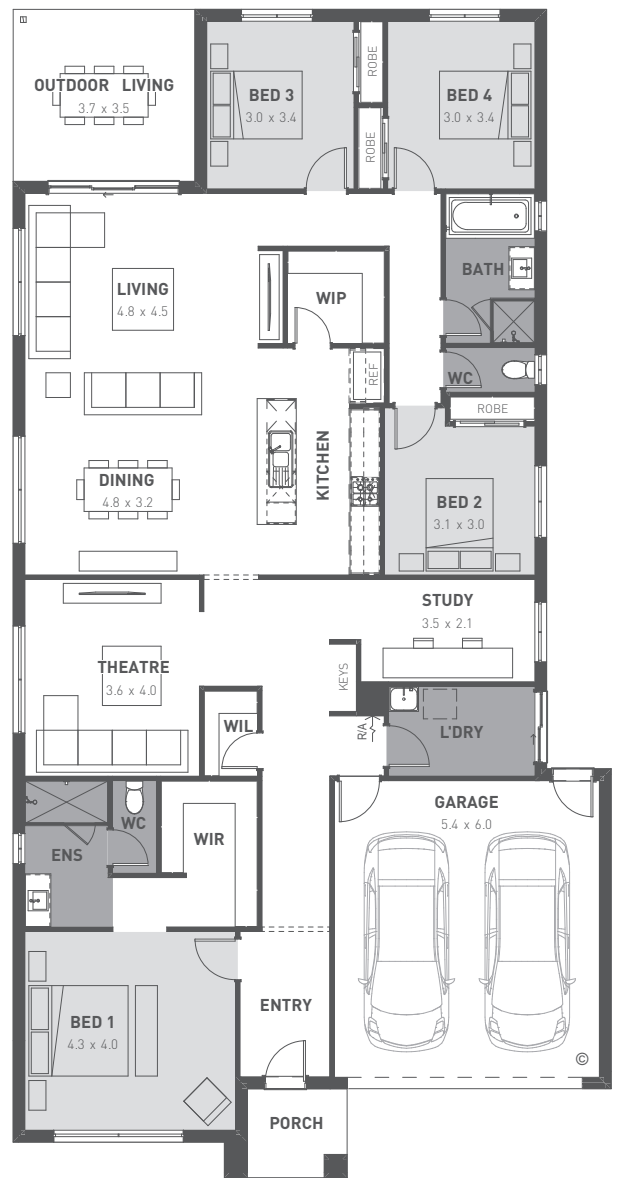
The kitchen is the social heart of this home, opening on to light-filled living and dining areas, and an inviting outdoor entertaining space. The open-plan design includes a generous kitchen with large island bench and walk-in pantry.

At the front of the house, flexible living spaces include a home office and a secluded sitting room, perfect for a library or home theatre.



Luxury Inclusions in this Display Home:

- Square set cornices to Bed 1, Entry and Study.
- Stunning archways throughout the home
- Black fittings and fixtures throughout
- Stacker doors to outdoor living
- Raked ceiling in open plan kitchen, living and dining
- Beautiful architectural façade
- Brivis Air-Conditioning
- Westinghouse 900mm wide stainless steel cooktop and oven
- Westinghouse stainless steel dishwasher
- Expansive butlers pantry fit for any cook
- Premium laundry with overhead cupboards



*Terms & Conditions apply. Interest Only Loan Repayments of \$362.22 per week are based upon a 20% deposit on the Initial Interest rate of 2.86%, reverting to the variable interest rate of 2.56% on the Resolve Home Loans Classic Saver Home Loan. The interest rates are effective 10 December 2021 and are subject to change. Fees & charges may apply including any applicable Lenders Mortgage Insurance. The Comparison rate is 2.72% and is based on Interest Only repayments for the first 5 years on a loan amount of \$607,920.00 over a loan term of 30 years. Warning: This comparison rate is true only for the examples given and may not include all fees and charges. Different terms, fees or other loan amounts might result in a different comparison rate. All finance services provided by Resolve Finance, Australian Credit Licence No. 385487.



vic.homebuyers.com.au/display-homes-for-sale/