

QUALITY DISPLAY HOMES FOR SALE

# Your Dream Home with 6%\* Guaranteed Return.



**You could earn positive income with a hassle-free investment.**

With flexible finance options available, let our in-house finance specialists help you choose the home loan that's right for you from some of Australia's leading lenders.

**Riviera 32 Cape facade**

Coridale Estate

Available for	\$899,900
Annual earnings	\$53,994*

\*Terms & Conditions apply. Annual earnings based only on a leaseback of 6% and does not factor in any mortgage repayments, interest rates, insurance, rates and service charges or body corporate fees. Earnings figure based on 6% of advertised purchase price From \$899,900 for Boutique Homes Riviera 32 at Coridale Estate in Lara, Victoria. Image used is for illustrative purposes only and may show decorative items not included in the purchase. Block and building dimensions may vary from the illustration and the details shown. For more information on the pricing and specification of this home please contact a New Homes Consultant. The building practitioner is ABN Group (Vic) Pty Ltd trading as Boutique Homes, registration number CDB-U 49215. ABN Group Victoria has permission of the owner of the land to advertise the land as part of the price specified. Correct as of 17 October 2022.

# Riviera 32

## Cape facade.

### Address

Coridale Estate  
9 Coridale Boulevard, Lara

### Specifications

Home area	299.67m <sup>2</sup>
Land size	512m <sup>2</sup>

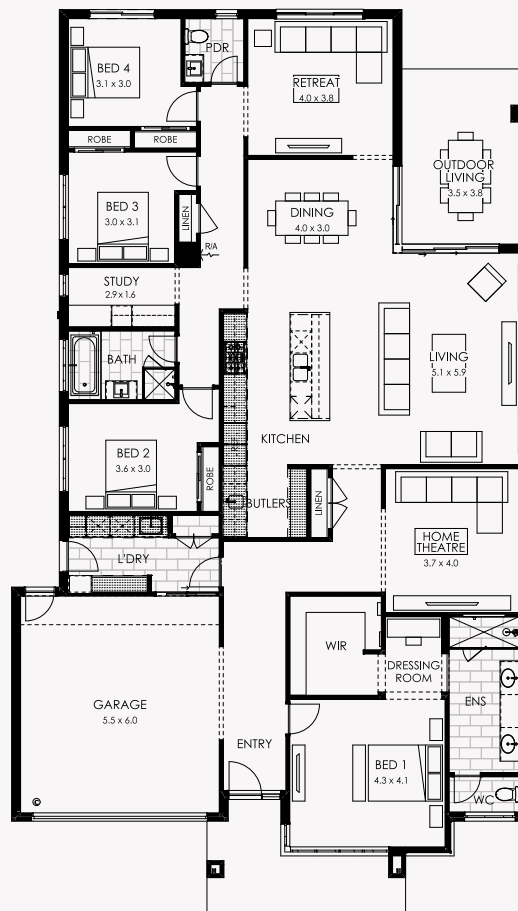


Adding country flare to a classic coastal interior style, the Riviera 32 in Coridale Estate welcomes you home to a generous suite of entertaining spaces, an elegant outdoor space and eye-catching master suite.

Positioned at the front of the home, the master bedroom suite features a walk-in robe, dressing area and generous ensuite with twin vanity and oversized shower. The three minor bedrooms run down the side of the home, carefully spaced out with the bathroom, powder room and laundry for maximum privacy.

### The Riviera 32 features a huge range of luxury upgrades and inclusions:

- Designer Cape facade
- Category seven carpet
- 60mm Caesarstone benchtop to kitchen
- Suite of ILVE appliances in the kitchen
- Undermounted Clark Monaco double bowl sink to kitchen
- Square set cornice to Entry, Hallway, Kitchen, Dining and Living
- Double glazed aluminium cornerless recessed stacking/sliding door
- Butler's pantry fit out with overhead cabinetry, 40mm Caesarstone and melamine shelves
- Laundry fit out with drying cupboard, laminated overhead cupboards and mud room
- Mosaic wall feature tile to ensuite
- Stunning interior colour scheme selected by our Senior Interior Designer
- Professional landscaping and fencing



Discover the difference  
[BoutiqueHomes.com.au](https://www.boutiquehomes.com.au)  
or call 9674 4500

**boutique**  
homes

**resolve**  
finance

**Coridale**  
CLUB & COUNTRY

\*Terms & Conditions apply. Annual earnings based only on a leaseback of 6% and does not factor in any mortgage repayments, interest rates, insurance, rates and service charges or body corporate fees. Earnings figure based on 6% of advertised purchase price From \$899,900 for Boutique Homes Riviera 32 at Coridale Estate in Lara, Victoria. Image used is for illustrative purposes only and may show decorative items not included in the purchase. Block and building dimensions may vary from the illustration and the details shown. For more information on the pricing and specification of this home please contact a New Homes Consultant. The building practitioner is ABN Group (Vic) Pty Ltd trading as Boutique Homes, registration number CDB-U 49215. ABN Group Victoria has permission of the owner of the land to advertise the land as part of the price specified. Correct as of 17 October 2022.