

Your **new** townhouse awaits



Artist impression only.



Stockland

MT. ATKINSON



Homebuyers
Centre



Artist impression only.

Welcome home

Homebuyers Centre leads the way in building modern affordable homes and have built a reputation as Australia's leading builder for first home buyers. We offer a wide range of affordable and stylish designs with house and land packages across Victoria.

Our innovative Urban Living townhouses are all about using space efficiently without compromising liveability and are all packaged in an easy turnkey solution. With a commitment to building premium and lifestyle-led homes, we have created contemporary, unique floor plans to suit every new homebuyer.

Homebuyers Centre is proudly part of the ABN Group, Australia's leading construction, property and finance group. ABN Group have built over 80,000 new homes across Victoria and Western Australia over the past 40 years.

We've also provided finance for more than 36,000 homeowners. So, although you may be building your first home, we have built many.

And with every home we build, we only get better.



Aidan Hooper
Managing Director
ABN Group



Unlock the door to Mt. Atkinson

Join Mt. Atkinson, a master-planned community in Truganina, designed to meet every aspect of quality, modern living in Melbourne's fast-growing western corridor. Located a mere 25km west of Melbourne's CBD, Mt. Atkinson provides natural beauty, connectivity and immediate access to all of life's essentials.

Join a rising community

Mt. Atkinson has been carefully planned to the last detail.

Mt. Atkinson, located in Truganina and a short 25 kilometres from Melbourne's CBD, provides all the essentials for a connected and convenient lifestyle. The well-thought-out master plan achieves harmony between modern infrastructure, transportation facilities, and the beauty of the natural environment. Future amenities will include a vibrant Town Centre featuring a major supermarket and specialty stores, a proposed indoor leisure centre, two primary schools, a planned secondary school, and an already opened community centre with a kindergarten.



- Legend**
- Future Residential Townhomes
 - Education
 - Proposed Community Centre
 - Proposed Retail/Commercial/Business
 - Proposed Mixed Use
 - Sold
 - Existing Train Line
 - Overhead Power Easement

Masterplan supplied for the purpose of providing an impression of Stockland Mt Atkinson and the approximate location of existing and proposed third party infrastructure, facilities, amenities, services and destinations, and is not intended to be used for any other purpose. Indications of location, distance or size are approximate and for indicative purposes only. Subject to change. Not to scale. All distance and travel timeframe references are estimates only, refer to distance by car or driving time (unless specified otherwise), and are based on information obtained from Google Maps at the time of publication (March 2024).



Indicative image only.

Etto

Natural sunlight flows throughout the entire open plan living area from the spacious balcony through to the living, dining and kitchen in the Etto. This three bedroom, two bathroom double rear garage home is an entertainers delight. With great views across the neighbourhood you can enjoy the afternoon sun on the elevated balcony while all three bedrooms remain private from the living areas for a space to really unwind.

Etto 21

3 2 2

Land Area: 133m²

Width: 7m

Length: 19m



Etto 21a

3 2 2

Land Area: 177m²

Width: 7.64m

Length: 19m





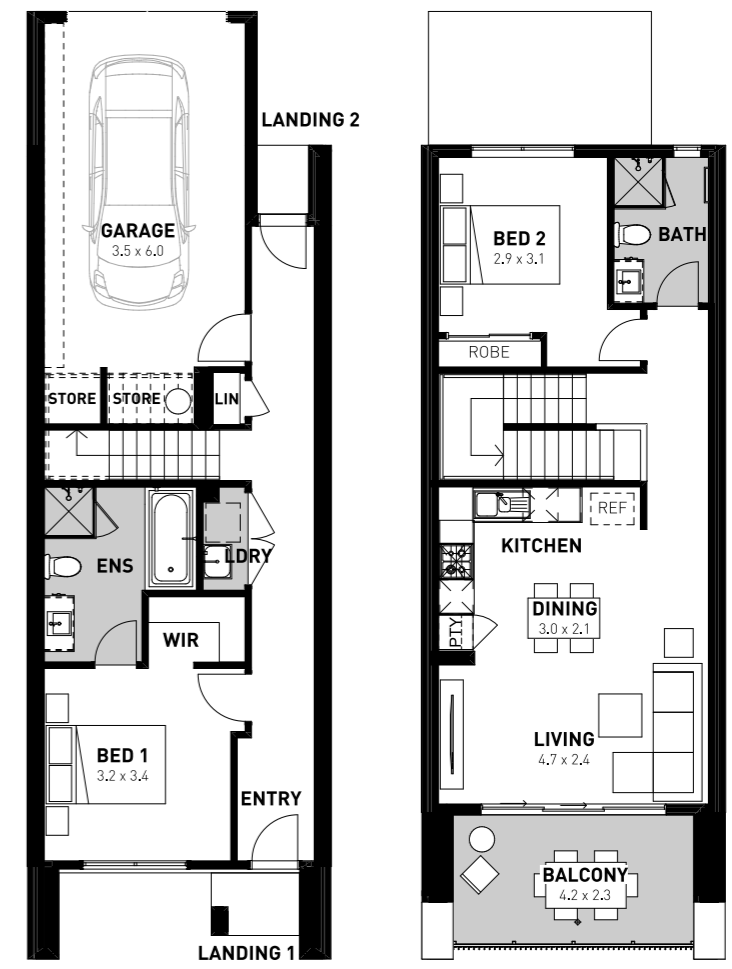
Miki

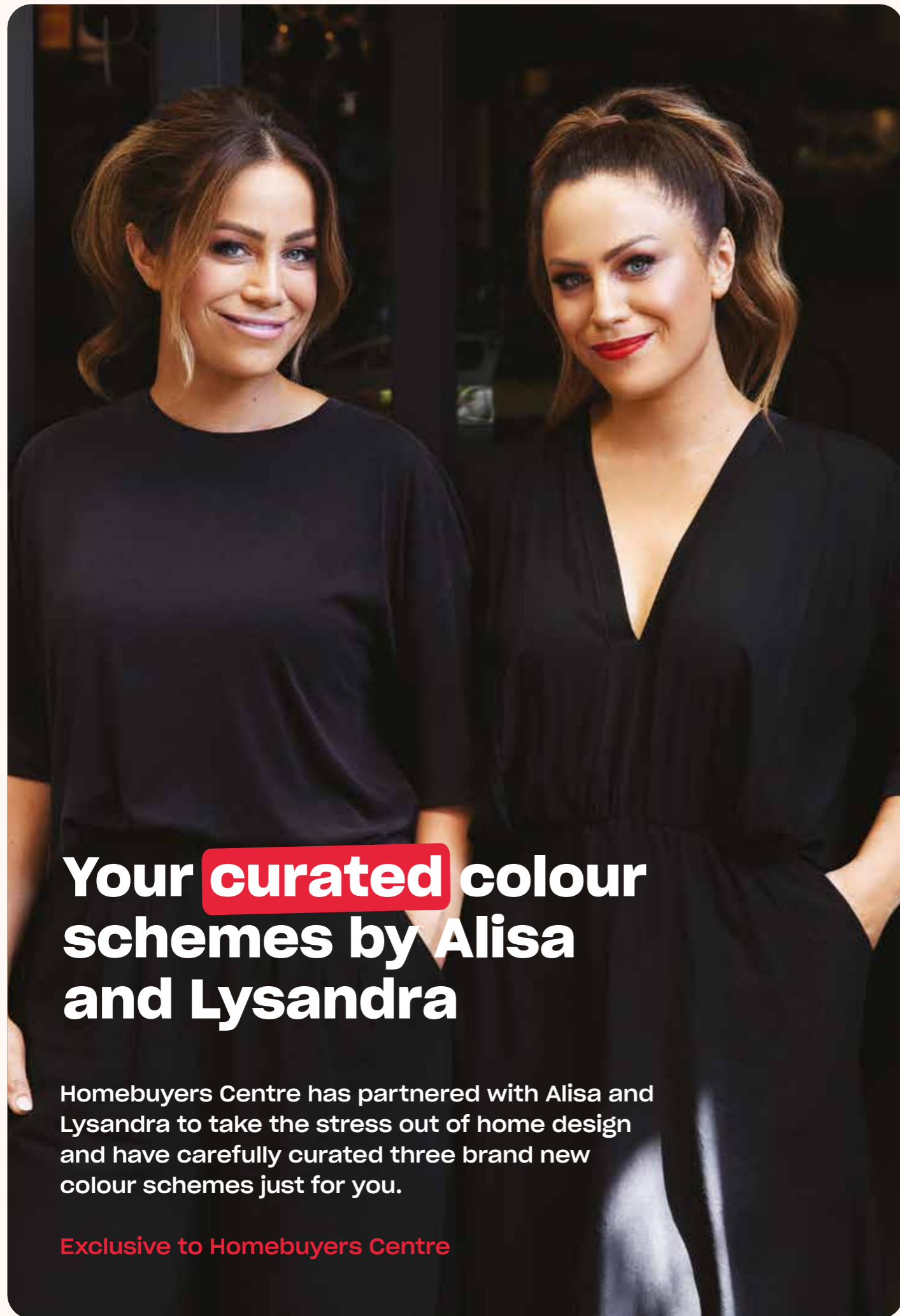
The Miki offers an affordable solution to home ownership without compromise. This stylish home has been cleverly designed to maximise light and space, providing you with comfortable living. Specially designed to combine the best in urban styling and functionality, the Miki embraces a light-filled open plan living area and two very private bedrooms. The master includes a generous ensuite including its own bath and walk-in robe downstairs, with an additional bedroom upstairs featuring a built-in robe.

Miki 16

 2
  2
  1

Land Area:	133m ²
Width:	7m
Length:	19m





Your **curated** colour schemes by Alisa and Lysandra

Homebuyers Centre has partnered with Alisa and Lysandra to take the stress out of home design and have carefully curated three brand new colour schemes just for you.

Exclusive to Homebuyers Centre



Industrial

Go bold or go home, or in this case design a bold home!

Perfect for the young professional couple or contemporary family, Homebuyers Centre's spin on this industrial style combines hard wearing, textural elements with sleek and stylish finishes to create a home that is bold and modern.



Coastal

The Australian beach-loving lifestyle

Coastal is everything you would expect in a stunning seaside abode. Cool and bright whites and pale greys replicate the soothing tones found in rolling sand dunes. This design scheme is fresh, light, energising and encapsulates everything we love about the Australian beach culture.



Adriatic

Take a trip to the Mediterranean

Channelling a cool and calming palette, the contemporary Adriatic scheme subtly references ocean tones, characterised by the unassuming and romantic aesthetic of the Mediterranean. A seamless blend of coastal and urban design, this scheme is impactful in all the right ways.



Artist impression only.

Standard Kitchen and Living Inclusions

- 1 600mm Westinghouse stainless steel electric oven under bench
- 2 600mm Westinghouse stainless steel gas cooktop
- 3 600mm Westinghouse stainless steel canopy rangehood
- 4 20mm stone benchtops
- 5 Quality floor coverings throughout
- 6 LED downlights to living areas
- 7 Choice of chrome or matte black tapware
- 8 Dulux Wash&Wear Paint

Kitchen and Living Upgrade

- 1 600mm Westinghouse stainless steel slideout rangehood and overhead cupboards to either side of rangehood and above fridge
- 2 Splashback/vanity tiles
- 3 Benchtop material
- 4 Upgraded flooring

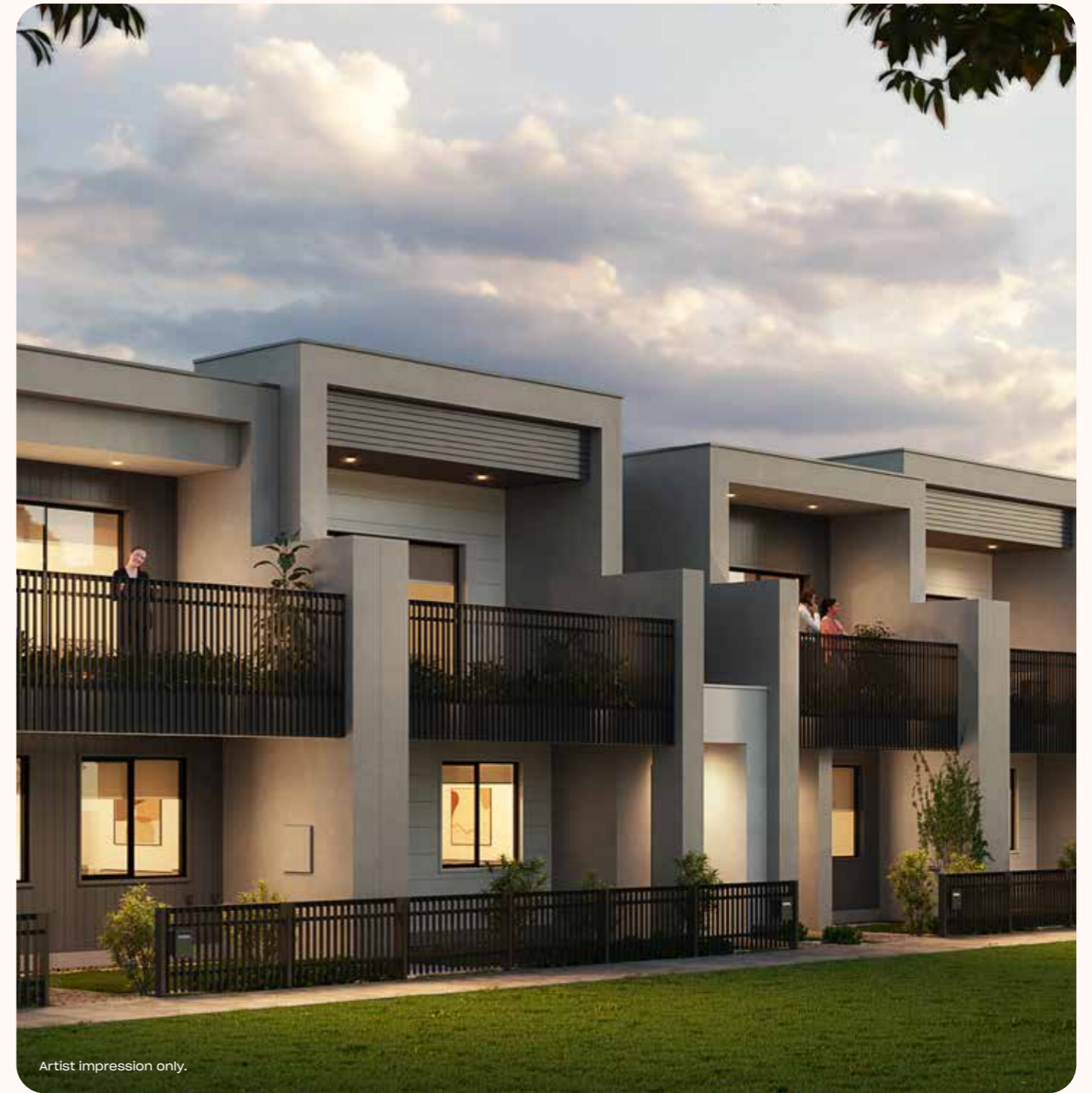


Your standard bathroom inclusions

- 1 2100mm high tiling
- 2 Tiled shower base
- 3 White acrylic bath
(design dependent, refer to working drawings)
- 4 Polished edge mirror above vanity
benchtops to match height of shower
screen

Upgrade options

- 1 Floor tiles
- 2 Wall tiles
- 3 Stone benchtop



Standard laundry inclusions

- Concealed washing machine taps
- Stainless steel trough and white metal cabinet

Standard turnkey inclusions

- Front and rear landscaping
- Exposed aggregate concrete
- Blinds
- Heating and cooling



Elevate your lifestyle

Lets get started!

Speak to a New Homes Consultant today and start your journey into home ownership at Mt. Atkinson.



**Homebuyers
Centre**



Stockland

MT. ATKINSON

**Learn more about living in Mt. Atkinson
— this is where the West lives.**

1 McKinley Drive, Truganina

homebuyers.com.au 131 751

All plans are protected by copyright and are owned by ABN Group (Vic) Pty Ltd. The building practitioner is ABN Group (Vic) Pty Ltd trading as Homebuyers Centre, registration number CDB-U 49215. Images and photographs are for illustrative purposes only and may depict fixtures, finishes, features, furnishings and landscaping not supplied by Homebuyers Centre. The information contained within this brochure is to be used as a guide only and Homebuyers Centre makes no guarantees about the accuracy or completeness of the information contained within it. For more information on our build process, pricing or specifications, please contact your New Homes Consultant. All information contained within this brochure is accurate at time of printing (March 2024). BH0370