

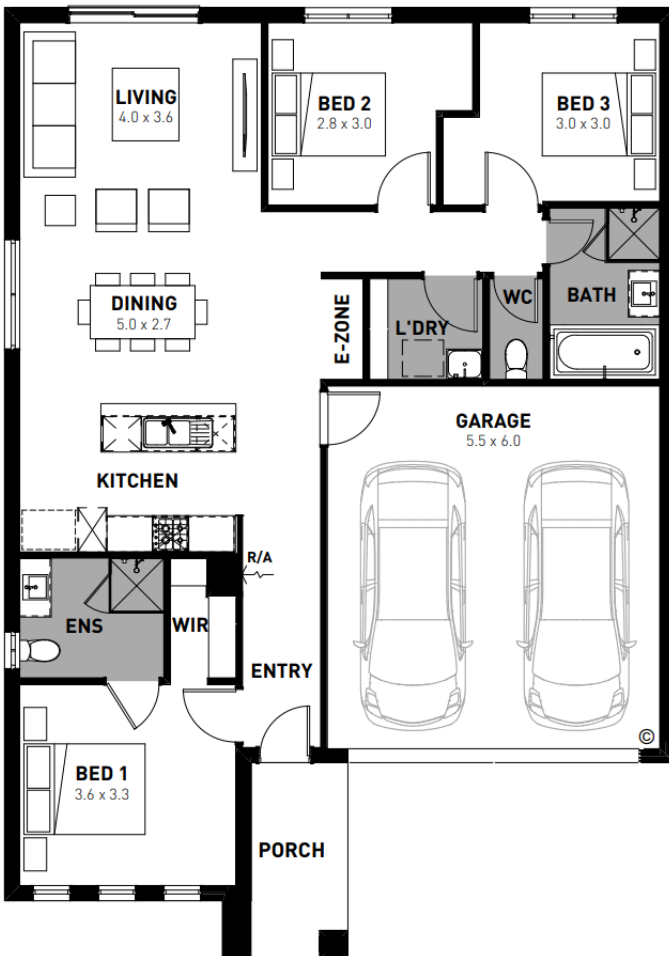
**Stockland  
First Home  
Sale\***



# Essence 17

4 2 2

From\* price package  
**\$528,000\***



**The Reserve Estate, Charlemont –  
304m<sup>2</sup>**

**Lot 209 Paley Street**

- # 7 Star energy rating
- # Exposed aggregate driveway
- # Modern façade included
- # Brick infills over windows
- # Quality floor coverings throughout
- # Low E double glazed windows and sliding doors
- # 3.5kW solar PV system
- # Tiled kitchen splashback
- # Westinghouse stainless steel appliances
- # Choice of matt black or chrome tapware
- # Brick infills over windows
- # 25 year structural guarantee
- # 12 month service warranty
- # Recycled water connection
- # 2550mm ceiling height to ground floor
- # Bushfire provision upgrades
- # NBN fibre optic pack

**H Homebuyers  
Centre**

\*T&Cs and exclusion apply. Includes third party promotion. Ends 15 November 2024 at 5pm ADST. Visit [vic.homebuyers.com.au](http://vic.homebuyers.com.au) for full terms and conditions. Price based on home type and floor plan shown and on builder's preferred siting. Floor plan depicts a traditional facade, modern facade shown and included in price. Image used is an artist impression for illustrative purposes only and may show decorative items not included in the price shown including path, fencing, landscaping, coach lights and furnishings. 'Fixed' pricing means that, subject to the terms of this disclaimer and any owner requested changes, the price advertised will be the price contained in the building contract entered into and this price will not change other than in accordance with the building contract. The price is based on developer supplied engineering plans and plans of subdivision and final pricing may vary if actual site conditions differ to those shown in these developer supplied documents. Block and building dimensions may vary from the illustration and the details shown. For more information on the pricing and specification of this home please contact a New Homes Consultant. ABN Group Victoria has permission of the owner of the land to advertise the land as part of the price specified. The price does not include transfer duty, settlement costs, community infrastructure levies imposed or any other fees or disbursements associated with the settlement of the land. Oct-24.

**Blake Pilkington**  
0422 856 815  
[blake@homebuyers.com.au](mailto:blake@homebuyers.com.au)