

# Your **new** townhouse awaits



Artist impression only.



Stockland

MT. ATKINSON



Homebuyers  
Centre



Artist impression only.

# Welcome home

**Homebuyers Centre leads the way in building modern affordable homes and have built a reputation as Australia's leading builder for first home buyers. We offer a wide range of affordable and stylish designs with house and land packages across Victoria.**

Our innovative Urban Living townhouses are all about using space efficiently without compromising liveability and are all packaged in an easy turnkey solution. With a commitment to building premium and lifestyle-led homes, we have created contemporary, unique floor plans to suit every new homebuyer.

Homebuyers Centre is proudly part of the ABN Group, Australia's leading construction, property and finance group. ABN Group have built over 80,000 new homes across Victoria and Western Australia over the past 40 years.

We've also provided finance for more than 36,000 homeowners. So, although you may be building your first home, we have built many.

And with every home we build, we only get better.



**Aidan Hooper**  
Managing Director  
ABN Group



## Unlock the door to Mt. Atkinson

Join Mt. Atkinson, a master-planned community in Truganina, designed to meet every aspect of quality, modern living in Melbourne's fast-growing western corridor. Located a mere 25km west of Melbourne's CBD, Mt. Atkinson provides natural beauty, connectivity and immediate access to all of life's essentials.

# Join a rising community

**Mt. Atkinson has been carefully planned to the last detail.**

Mt. Atkinson, located in Truganina and a short 25 kilometres from Melbourne's CBD, provides all the essentials for a connected and convenient lifestyle. The well-thought-out master plan achieves harmony between modern infrastructure, transportation facilities, and the beauty of the natural environment. Future amenities will include a vibrant Town Centre featuring a major supermarket and specialty stores, a proposed indoor leisure centre, two primary schools, a planned secondary school, and an already opened community centre with a kindergarten.



Masterplan supplied for the purpose of providing an impression of Stockland Mt Atkinson and the approximate location of existing and proposed third party infrastructure, facilities, amenities, services and destinations, and is not intended to be used for any other purpose. Indications of location, distance or size are approximate and for indicative purposes only. Subject to change. Not to scale. All distance and travel timeframe references are estimates only, refer to distance by car or driving time (unless specified otherwise), and are based on information obtained from Google Maps at the time of publication (March 2024).

# Etto

Natural sunlight flows throughout the entire open plan living area from the spacious balcony through to the living, dining and kitchen in the Etto. This three bedroom, two bathroom double rear garage home is an entertainers delight. With great views across the neighbourhood you can enjoy the afternoon sun on the elevated balcony while all three bedrooms remain private from the living areas for a space to really unwind.



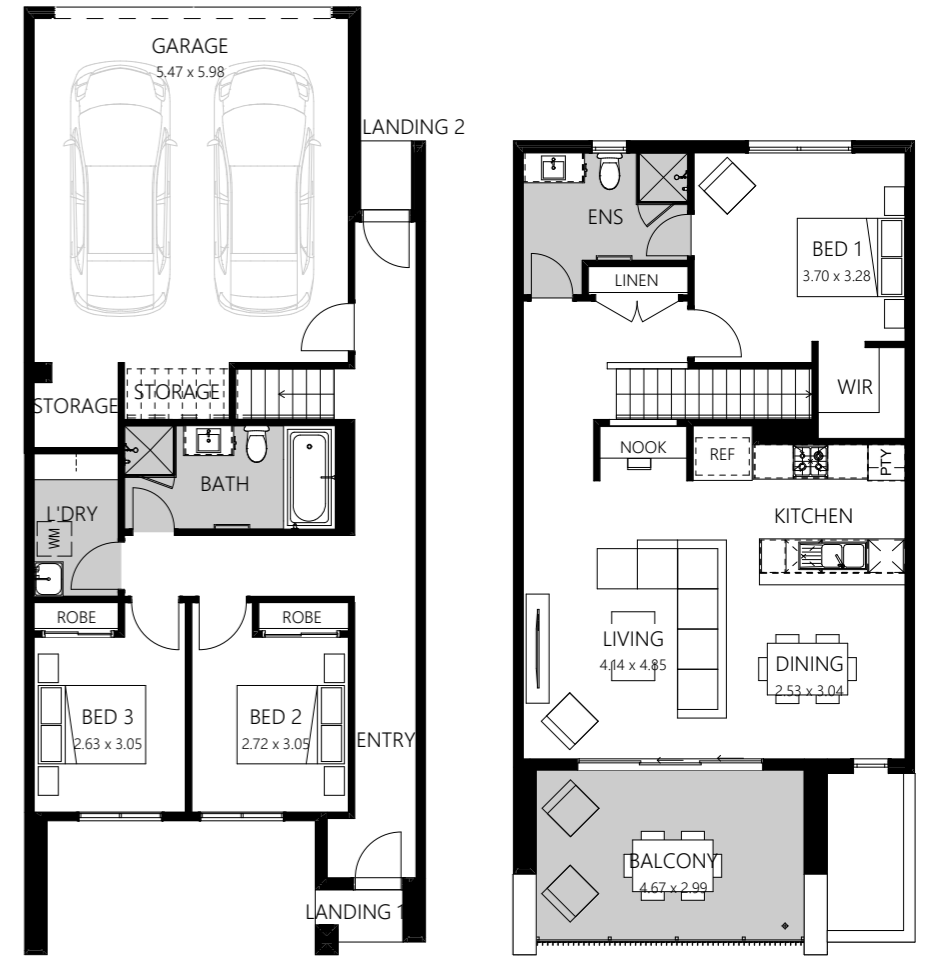
## Etto 21

3 2 2

**Land Area:** 133m<sup>2</sup>

**Width:** 7m

**Length:** 19m



## Etto 16

2 2 1

**Land Area:** 133m<sup>2</sup>

**Width:** 7m

**Length:** 19m



## Etto 21a

3 2 2

**Land Area:** 177m<sup>2</sup>

**Width:** 7.64m

**Length:** 19m





Indicative image only.



## Your **curated** colour schemes to choose from

Selecting the ideal look for your townhouse has never been easier with our three expertly crafted colour schemes. Designed with style and balance in mind, these options take the guesswork out of the process, making building your new townhouse both seamless and stress-free.



## Industrial

Go bold or go home, or in this case design a bold home!

Perfect for the young professional couple or contemporary family, Homebuyers Centre's spin on this industrial style combines hard wearing, textural elements with sleek and stylish finishes to create a home that is bold and modern.



## Coastal

The Australian beach-loving lifestyle

Coastal is everything you would expect in a stunning seaside abode. Cool and bright whites and pale greys replicate the soothing tones found in rolling sand dunes. This design scheme is fresh, light, energising and encapsulates everything we love about the Australian beach culture.



## Adriatic

Take a trip to the Mediterranean

Channelling a cool and calming palette, the contemporary Adriatic scheme subtly references ocean tones, characterised by the unassuming and romantic aesthetic of the Mediterranean. A seamless blend of coastal and urban design, this scheme is impactful in all the right ways.



### Standard Kitchen and Living Inclusions

- 1 600mm Westinghouse stainless steel electric oven under bench
- 2 600mm Westinghouse stainless steel gas cooktop
- 3 600mm Westinghouse stainless steel canopy rangehood
- 4 20mm stone benchtops
- 5 Quality floor coverings throughout
- 6 LED downlights to living areas
- 7 Choice of chrome or matte black tapware
- 8 Dulux Wash&Wear Paint

### Kitchen and Living Upgrade

- 1 600mm Westinghouse stainless steel slideout rangehood and overhead cupboards to either side of rangehood and above fridge
- 2 Splashback/vanity tiles
- 3 Benchtop material
- 4 Upgraded flooring





### Your standard bathroom inclusions

- 1 2100mm high tiling
- 2 Tiled shower base
- 3 White acrylic bath  
(design dependent, refer to working drawings)
- 4 Polished edge mirror above vanity  
benchtops to match height of shower  
screen

### Upgrade options

- 1 Floor tiles
- 2 Wall tiles
- 3 Stone benchtop



Artist impression only.

### Standard laundry inclusions

- Concealed washing machine taps
- Stainless steel trough and white metal cabinet

### Standard turnkey inclusions

- Front and rear landscaping
- Exposed aggregate concrete
- Blinds
- Heating and cooling



# Elevate your lifestyle

**Lets get started!**

Speak to a New Homes Consultant today and start your journey into home ownership at Mt. Atkinson.



**Homebuyers  
Centre**



**Stockland**

---

**MT. ATKINSON**

**Learn more about living in Mt. Atkinson  
— this is where the West lives.**

**1 McKinley Drive, Truganina**

**homebuyers.com.au 131 751**

All plans are protected by copyright and are owned by ABN Group (Vic) Pty Ltd. The building practitioner is ABN Group (Vic) Pty Ltd trading as Homebuyers Centre, registration number CDB-U 49215. Images and photographs are for illustrative purposes only and may depict fixtures, finishes, features, furnishings and landscaping not supplied by Homebuyers Centre. The information contained within this brochure is to be used as a guide only and Homebuyers Centre makes no guarantees about the accuracy or completeness of the information contained within it. For more information on our build process, pricing or specifications, please contact your New Homes Consultant. All information contained within this brochure is accurate at time of printing (December 2024). BH0370