

Home  
Starter  
Range\*

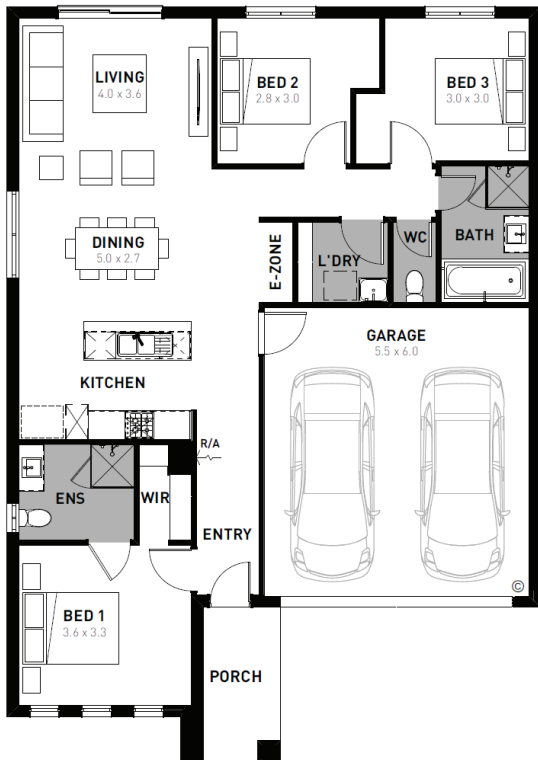


Fixed price package

**\$569,900\***

## Essence 17

3 2 2



Heartford Donnybrook - 263m<sup>2</sup>

462 Frittata Street

- # Fixed site costs
- # Sidney facade included
- # 7-star energy rating
- # Quality floor coverings throughout
- # 600mm stainless steel kitchen appliances
- # Double glazed windows and sliding doors
- # 3.5K solar PV system
- # Choice of Industrial or Coastal colour scheme
- # 12 month maintenance period
- # 25 year structural guarantee
- # Opticomm Fibre Optic Connction
- # Recycled Water Connection

**H Homebuyers  
Centre**

\*T&Cs apply. Offer subject to availability and limited to the first forty (40) customers and builder capacity. The Home Starter Range is limited to customers who sign a Preliminary Works Contract (PWC), between 8 Jan - 31 Mar 2025. This offer cannot be modified, substituted, or redeemed for cash. Homebuyers Centre reserves the right to update, change or cease this offer. Not to be used in conjunction with any other offer (discounts, incentives, or promotions). Full terms & conditions visit vic.homebuyers.com.au. The building practitioner is ABN Group (Vic) Pty Ltd trading as Homebuyers Centre CDB-U49215. Price based on home type and floor plan shown and on builder's preferred siting. Image used is an artist impression for illustrative purposes only and may show decorative items not included. Fixed pricing means that, subject to the terms of this disclaimer and any owner requested changes, the price advertised will be the price contained in the building contract entered into and this price will not change other than in accordance with the building contract. The price is based on developer supplied engineering plans and plans of subdivision and final pricing may vary if actual site conditions differ to those shown in these developer supplied documents. Block and building dimensions may vary from the illustration and the details shown. ABN Group Victoria has permission of the owner of the land to advertise the land as part of the price specified. The price does not include transfer duty, settlement costs, community infrastructure levies imposed or any other fees or disbursements associated with the settlement of the land.

Homebuyers Centre  
131 751  
info.vic@homebuyers.com.au