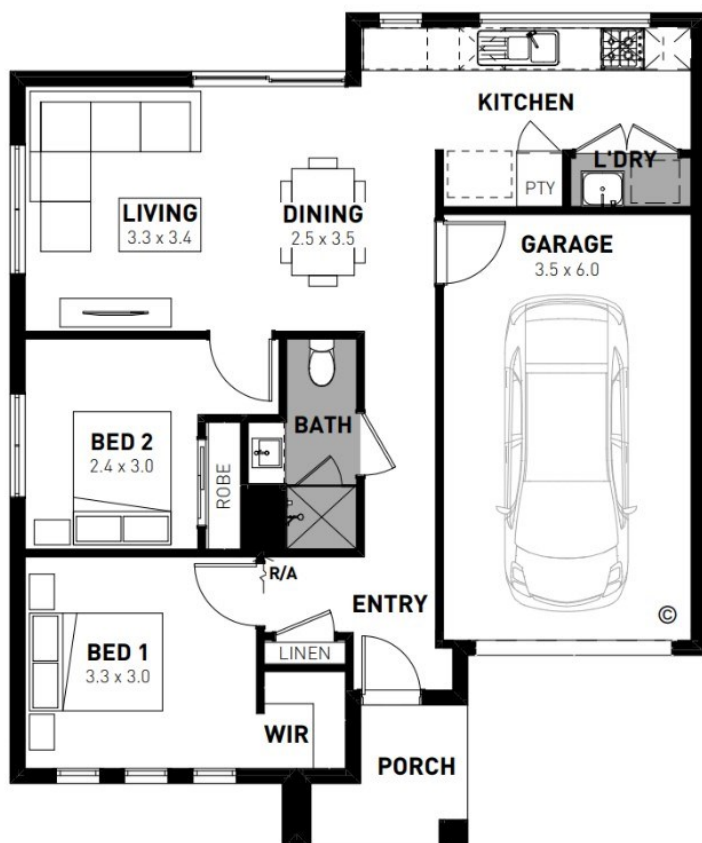




Package From  
**\$549,999\***

# Atlas 11

2 1 1



**Ellery Wollert - 251m<sup>2</sup>**

**#1009 57 Landover Road**

- Exposed aggregate driveway
- Modern facade included
- Quality floor coverings throughout
- Tiled kitchen splashback
- Westinghouse stainless steel appliances
- Choice of matt black or chrome tapware
- Brick infills over windows
- 25 year structural guarantee
- 12 month service warranty
- 7 Star energy rating
- Opticomm connection

**H Homebuyers  
Centre**

**Bradley 0401 222 506**  
**bradley@homebuyers.com.au**

From 1 May 2024, Victoria will adopt changes to the National Construction Code that seek to improve the energy efficiency and accessibility of housing. We are currently updating our pricing and is an indicative amount only. We will endeavour to provide accurate pricing by 13 May 2024. Find out more here or speak to a New Homes Consultant for more information. \*Price based on home type and floor plan shown and on builder's preferred siting. Floor plan depicts a traditional facade, modern facade shown and included in price. Image used is an artist impression for illustrative purposes only and may show decorative items not included in the price shown including path, fencing, landscaping, coach lights and furnishings. "From" pricing means that, subject to the terms of this disclaimer and any owner requested changes, the price advertised will be subject to change once fixed site costs and developer guidelines are confirmed. The price is based on an estimate and final pricing may vary if actual site conditions differ to those shown in these developer supplied documents Block and building dimensions may vary from the illustration and the details shown. For more information on the pricing and specification of this home please contact a New Homes Consultant. ABN Group Victoria has permission of the owner of the land to advertise the land as part of the price specified. The price does not include transfer duty, settlement costs, community infrastructure levies imposed or any other fees or disbursements associated with the settlement of the land. May-24