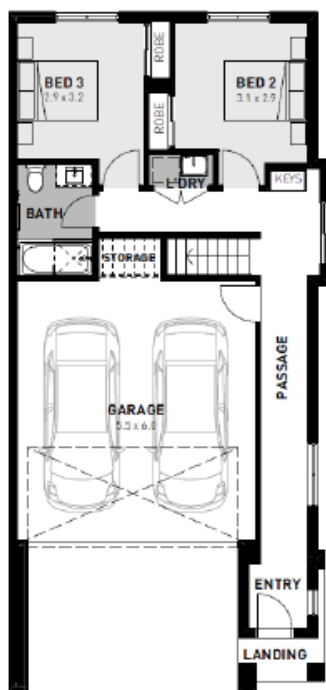




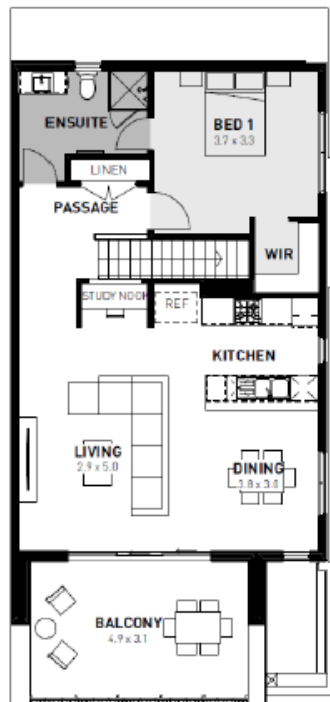
Fixed price package  
**\$624,900\***

# Kaya 20

3 2 2



Ground Floor



First Floor

## Meridian Village, Clyde North

908 Titan Drive —171m<sup>2</sup>

- Complete turnkey inclusions
- 100% fixed site costs and pricing
- Heating and cooling included
- Quality floor coverings throughout
- Westinghouse stainless steel appliances
- 20mm crystalline silica-free benchtops
- Smart control garage door with camera and app security
- Front and rear landscaping
- Exposed aggregate driveway
- Opticomm connection
- 25 year structural guarantee
- 12 month service warranty

**H Homebuyers Centre**

131 751  
[info@homebuyers.com.au](mailto:info@homebuyers.com.au)

All plans are protected by copyright and are owned by ABN Group (Vic) Pty Ltd. The building practitioner is ABN Group (Vic) Pty Ltd trading as Homebuyers Centre, registration number CDB-U 49215. Images and photographs are for illustrative purposes only and may depict fixtures, finishes, features, furnishings and landscaping not supplied by Homebuyers Centre. Homebuyers Centre reserves the right to change home design measurements and design options without notice. For more information on pricing, facades or specifications, please contact your New Homes Consultant. All information contained within this document is accurate at time of printing (May 2025).