

**Up to
\$25,000***
of added
inclusions

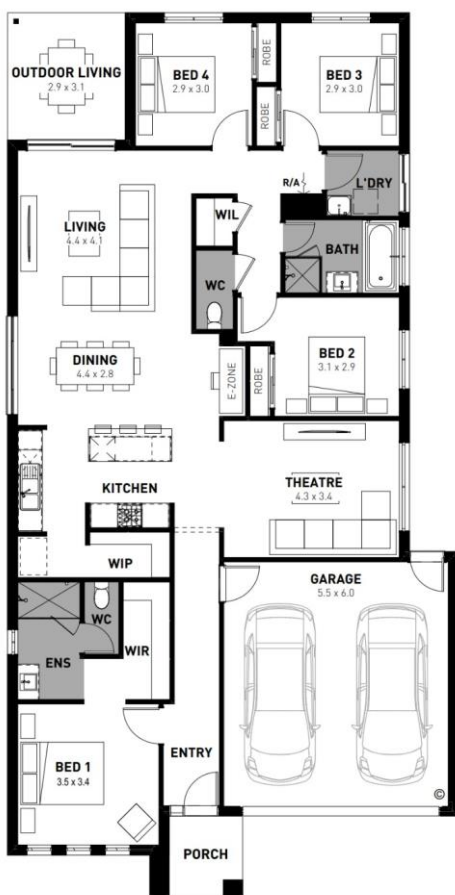


Fixed price package

\$584,250*

Harvey Boost 23

4 2 2



Carrington Winter Valley - 569m2

937 Cruz Circuit

- # Fixed Site Costs
- # Exposed aggregate driveway
- # Choose from 4 Upgraded facades
 - Bromleigh, Celine, Prescott or Soul
 - Bromleigh Shown
- # Quality floor coverings throughout
- # 2550mm high ceilings to ground floor
- # 20mm crystalline silica-free benchtops
- # Westinghouse 900mm wide stainless-steel oven, cooktop and rangehood
- # 400mm X 600mm niche to showers
- # Downlights to entry, kitchen, dining, living and bedrooms
- # Additional double power points, additional TV point and data point
- # Roller blackout blinds (excluding wet areas and entry door sidelight)
- # 25 year structural guarantee & 12 month service
- # 2,000L Water Tank
- # NBN fibre optic pack



*Terms and conditions apply. The 'Homebuyers Boost' is only applicable to the Jasper Boost 17, Addison Boost 20, Harvey Boost 23, Lawson Boost 28 and Onyx Boost 21 floor plans and is only available to customers who sign a Preliminary Works Contract (PWC) between April 1, 2025 and June 30, 2025. Up to \$25k worth of inclusions is based on the RRP of overhead cabinetry to kitchen, 20mm crystalline silica-free benchtops to kitchen, bath and ensuite, roller blinds (excluding wet areas) and downlights to kitchen, living, dining and hallway based on the Onyx Boost 21. The 'Homebuyers Boost' pricing includes Homebuyers Centre's Bromleigh, Celine, Prescott and Soul single storey designer facades, and Urban and Cosmo double storey designer facades within the base price. This offer cannot be modified, substituted, redeemed for cash or applied to the base price of the home. Not available with any other discounts, incentives or promotions. Homebuyers Centre reserves the right to update, change or cease this offer at any time. Images are for illustrative purposes only and may depict upgrades, fixtures or fittings not included. See <https://vic.homebuyers.com.au/disclaimer/> for full terms and conditions. The building practitioner is ABN Group (Vic) Pty Ltd trading as Homebuyers Centre CDB-U 49215

Joshua Pianta
0400 902 282
jpianta@homebuyers.com.au