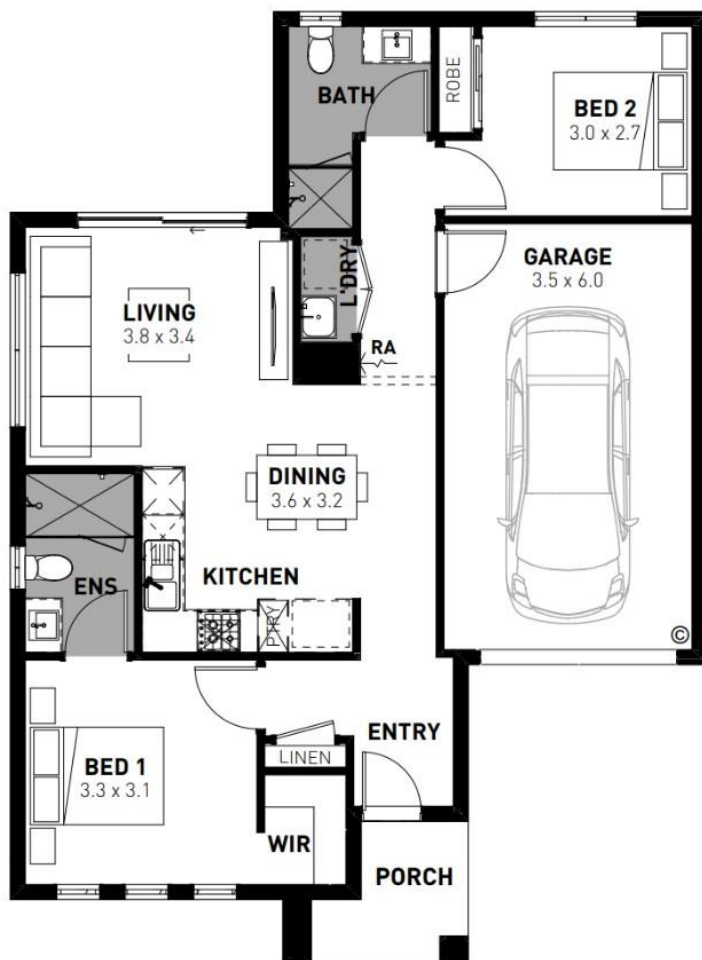




Bailey 11

2 2 1



FROM package price
\$543,600*

Society1056, Fraser Rise - 176m²
Lot 527 Biodiversity Esplanade

- # 7 Star energy rating
- # Exposed aggregate driveway
- # Soul façade included
- # 2550mm ceiling height to ground floor
- # Quality floor coverings throughout
- # Low E double glazed windows and sliding doors
- # Tiled kitchen splashback
- # Westinghouse stainless steel appliances
- # Choice of matt black or chrome tapware
- # Site costs allowance
- # NBN fibre optic pack
- # Electrical package upgrade
- # 6.6kw Solar Package
- # 2,000L slimline Colorbond water tank
- # 25 year structural guarantee
- # 12 month service warranty



*Price based on home type and floor plan shown and on builder's preferred siting. Floor plan depicts a traditional facade, modern facade shown and included in price. Image used is an artist impression for illustrative purposes only and may show decorative items not included in the price shown including path, fencing, landscaping, coach lights and furnishings. "From" pricing means that, subject to the terms of this disclaimer and any owner requested changes, the price advertised will be subject to change once fixed site costs and developer guidelines are confirmed. The price is based on an estimate and final pricing may vary if actual site conditions differ to those shown in these developer supplied documents Block and building dimensions may vary from the illustration and the details shown. For more information on the pricing and specification of this home please contact a New Homes Consultant. ABN Group Victoria has permission of the owner of the land to advertise the land as part of the price specified. The price does not include transfer duty, settlement costs, community infrastructure levies imposed or any other fees or disbursements associated with the settlement of the land. Sep-25

Homebuyers Centre
131 751
Info.vic@homebuyers.com.au