

# Invest with confidence 8% rental return guaranteed

Secure a minimum 8% rental return on select quality Display Homes.



## Winton 25

271 Cuthberts Road, Lucas

Homebuyers Centre Display Home investments guarantee 8% leaseback, which include landscaping and upgrades, plus your tenants [Homebuyers Centre] have it professionally maintained throughout the duration of the Display Village being open. With flexible finance available, let our in-house finance specialists help you choose the home loan that's right for you from some of Australia's leading lenders.

**Purchase price:** \$829,900  
**Leaseback:** 8%  
**Annual Return:** \$71,192\*

**Facade:** Hayman  
**Estate:** Lucas  
**Suburb:** Ballarat  
**Developer:** Lendlease  
**Leaseback:** 8%  
**Leaseback amount:** \$66,392\*

[vic.homebuyers.com.au/display-homes-for-sale](http://vic.homebuyers.com.au/display-homes-for-sale)

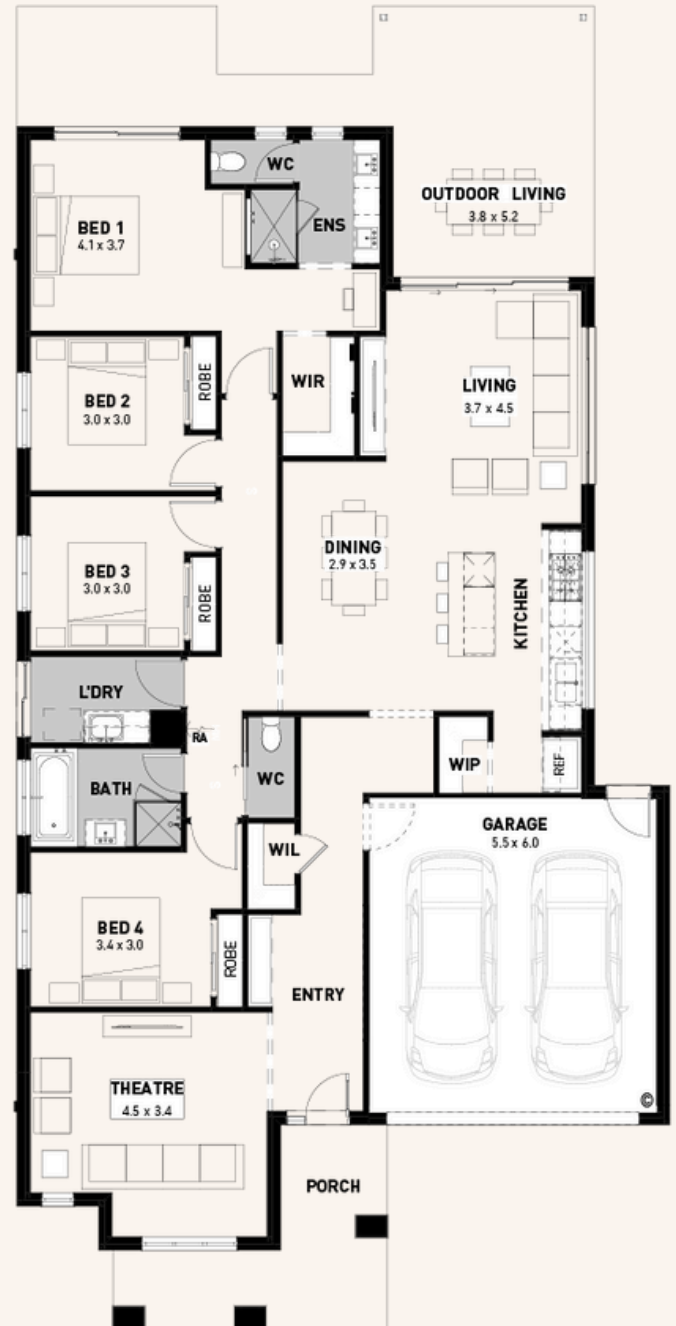
**resolve.**  
finance

\*Terms & Conditions apply. Annual earnings based only on a leaseback of 8% and does not factor in any mortgage repayments, interest rates, insurance, rates and service charges or body corporate fees. Earnings figure based on 8% of advertised purchase price From \$829,900 for Homebuyers Centre Winton 25 at Lucas Estate, Lucas. Image used is for illustrative purposes only and may show decorative items not included in the purchase. Block and building dimensions may vary from the illustration and the details shown. For more information on the pricing and specification of this home please contact a New Homes Consultant. The building practitioner is ABN Group (Vic) Pty Ltd trading as Homebuyers Centre, registration number CDB-U 49215. ABN Group Victoria has permission of the owner of the land to advertise the land as part of the price specified. Correct as of 05/02/2026.

Home design doesn't get much better than the Winton 25.

The Winton is designed with larger family living and convenience in mind. The main bedroom, strategically located at the rear, offers a private haven complete with a walk-in robe and upgraded double vanity ensuite.

At the heart of the Winton is a generous open-plan living area, seamlessly integrating the upgraded alternate kitchen, dining, and lounge spaces - ideal for lively family gatherings and everyday living. The home also features two spacious living areas, ensuring comfort and privacy for busy households.



## Luxury Inclusions in this Display Home:

- Alternate kitchen
- Walk-in pantry
- Double vanity to ensuite
- 900mm Westinghouse stainless steel appliances
- 20mm Stone Ambassador crystalline silica-free benchtop to kitchen and ensuite
- 2550mm ceiling height
- Chrome tapware