




**Home  
Starter  
Range\***

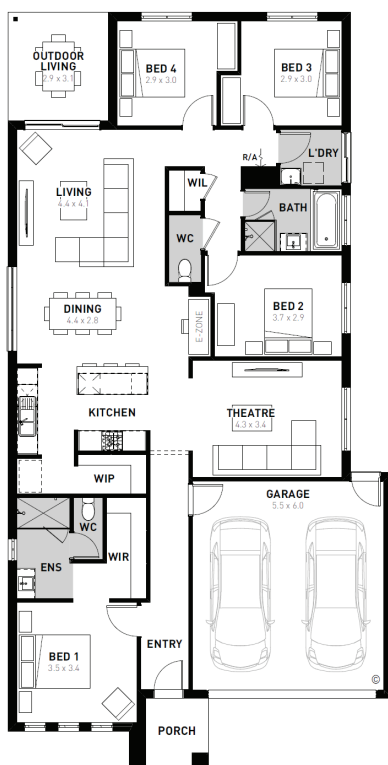


Fixed price package

**\$687,200\***

## Solace 23

 4  2  2



**Glenlee Charlemont – 350m<sup>2</sup>**

**1410 Rechenberg Boulevard**

- # Fixed site costs
- # Hudson facade included
- # 7-star energy rating
- # Quality floor coverings throughout
- # 600mm stainless steel kitchen appliances
- # Double glazed windows and sliding doors
- # 3.5K solar PV system
- # Choice of Industrial or Coastal colour scheme
- # 12 month maintenance period
- # 25 year structural guarantee
- # NBN Connection Point
- # Recycled Water Connection Point

**Homebuyers  
Centre**

Terms and conditions apply. The offer of the Home Starter Range is limited to customers who sign a Preliminary Works Contract (PWC), between 8 October, 2025 to 31 December 2025. Images are for illustrative purposes only and may depict items not included in the price. This offer cannot be modified, substituted or redeemed for cash. Homebuyers Centre reserves the right to update, change or cease this offer. Not to be used in conjunction with any other offer (discounts, incentives or promotions). See [vic.homebuyers.com.au](http://vic.homebuyers.com.au) for full terms and conditions. The building practitioner is ABN Group (Vic) Pty Ltd trading as Homebuyers Centre CDB-U49215. 'Fixed' pricing means that, subject to the terms of this disclaimer and any owner requested changes, the price advertised will be the price contained in the building contract entered into and this price will not change other than in accordance with the building contract. The price is based on developer supplied engineering plans and plans of subdivision and final pricing may vary if actual site conditions differ to those shown in these developer supplied documents.

**Homebuyers Centre**  
131 751  
[info.vic@homebuyers.com.au](mailto:info.vic@homebuyers.com.au)